

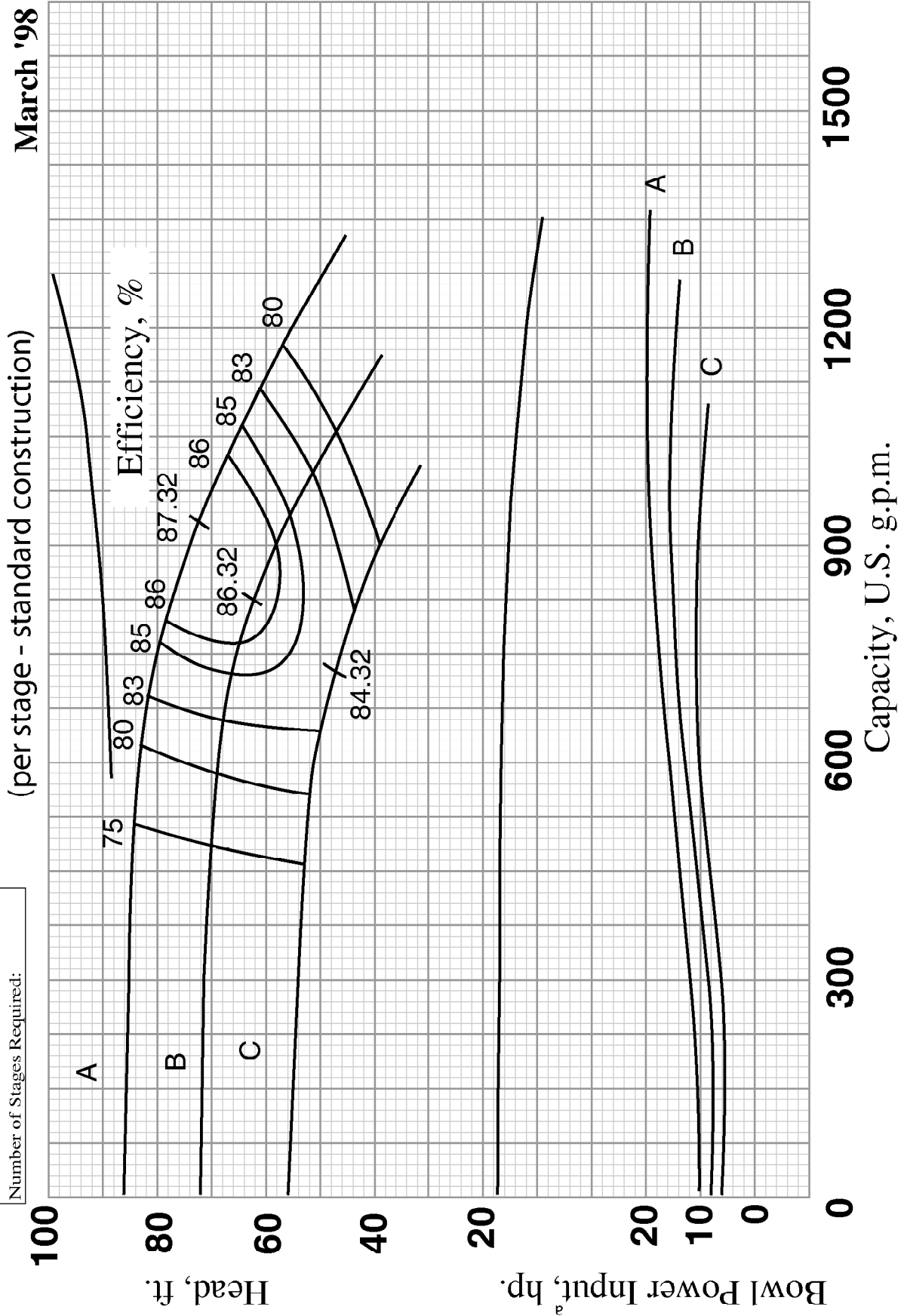


# Performance Curves

12-M-100

1760 RPM

March '98



N.P.S.H. Required, ft.

Hydraulic Thrust Factor,<sup>b</sup>  
lbs./ft. of head

Number of Stages Required:

A

B

C

Efficiency, %

100

Head, ft.

Bowl Power Input, hp.<sup>a</sup>

Capacity, U.S. g.p.m.

20

10

0

10

5

0

1500

1200

900

600

300

0